

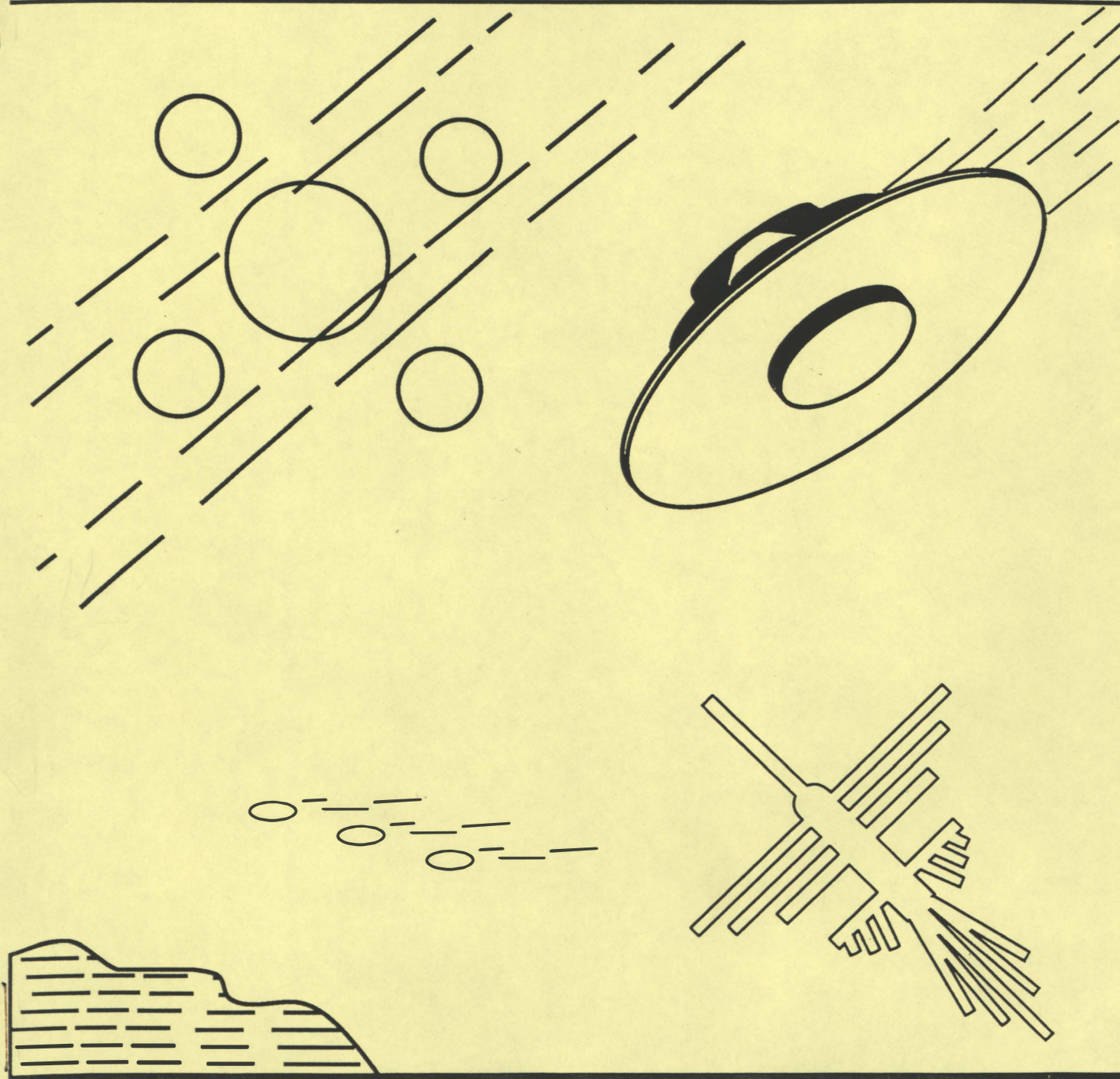
---

JULY

< OVNI >

1995

---



---

Newsletter of the Phenomenon Research Association  
Price £1 including postage - Members Free



## PHENOMENON RESEARCH ASSOCIATION NEWSLETTER: JULY 1995

### Group Leader:

Omar Fowler  
94 The Circle  
Sinfin  
Derby  
DE24 9HR

### Secretary:

Claire Upton  
3 Hayes Wood Rd.  
Stanley Common  
Derbyshire  
DE7 6GB

Tel/Fax 01332 761464

Tel/Fax 0115 9321837

---

### Crop Circles 1995

A further number of Crop Circles have occurred in Southern England in recent weeks and the four photographs shown in this issue are typical of the news designs to be found this year.

Matterley Farm Near Winchester, Hampshire is the site of a 32 circle configuration. A quintuplet set of circles first appeared on this site during the summer of 1985. This year the circle formation has formed in a wheatfield and is some 150 feet in overall diameter. The centre circle is approx. 30 feet in diameter, with the other circles ranging in diameter from 15 feet to 6 feet. The group of circles appear to be a genuine formation, with the scattered pattern giving some authenticity.

Reading, Berkshire, This Crop Circle (45 feet) with an outer 'trench' (140 feet) appeared near the town of Reading. The whole pattern gives the appearance of being roughly made and in view of the fact that it is situated in a wheatfield close to the town, it has probably been man-made and can be classed as a hoax.

West Stowell near Alton Barnes, Wiltshire saw the appearance of a quintuplet set in late June of this year. The offset, asymmetrical design appears to be deliberate and is similar to a design seen in Washington State U.S.A. last year. The centre circle is 35 feet in diameter, with the 'satellite' circles being 12 feet with an outer trench 14 feet wide and an overall diameter of 108 feet.

Longwood Warren near Winchester, is in the same area as Cheesefoot Head and was the site of a third set of Crop Circles in what has been termed the 'asteroid' series. The set of circles appeared in a wheat crop in late June. The formation is quite exquisite, with standing lines of wheat only one foot across, making up the centre orbital design. Apart from the design representing four planets and their orbits. A number of small 'grapeshot' circles are in the vicinity. The overall diameter of the crop circle group is 140 feet.

(All photographs supplied by F.C.Taylor)

We have heard from various sources that local farmers are so annoyed with sightseers damaging their crop, they are now cutting the wheat as quickly as possible to prevent any further damage. We have also heard that in some instances the farmers have called in the Police to keep away the curious public.

An area of Crop Circle investigation that is creating great interest, is the work being carried out by 'dowsers' such as Michael Newark. The apparent ability of a dowser to detect so called 'Earth Energy' has enabled them to declare whether a Crop Circle contains any energy and is therefore genuine or if there is no sign of energy, then the circle could be considered to be a hoax.

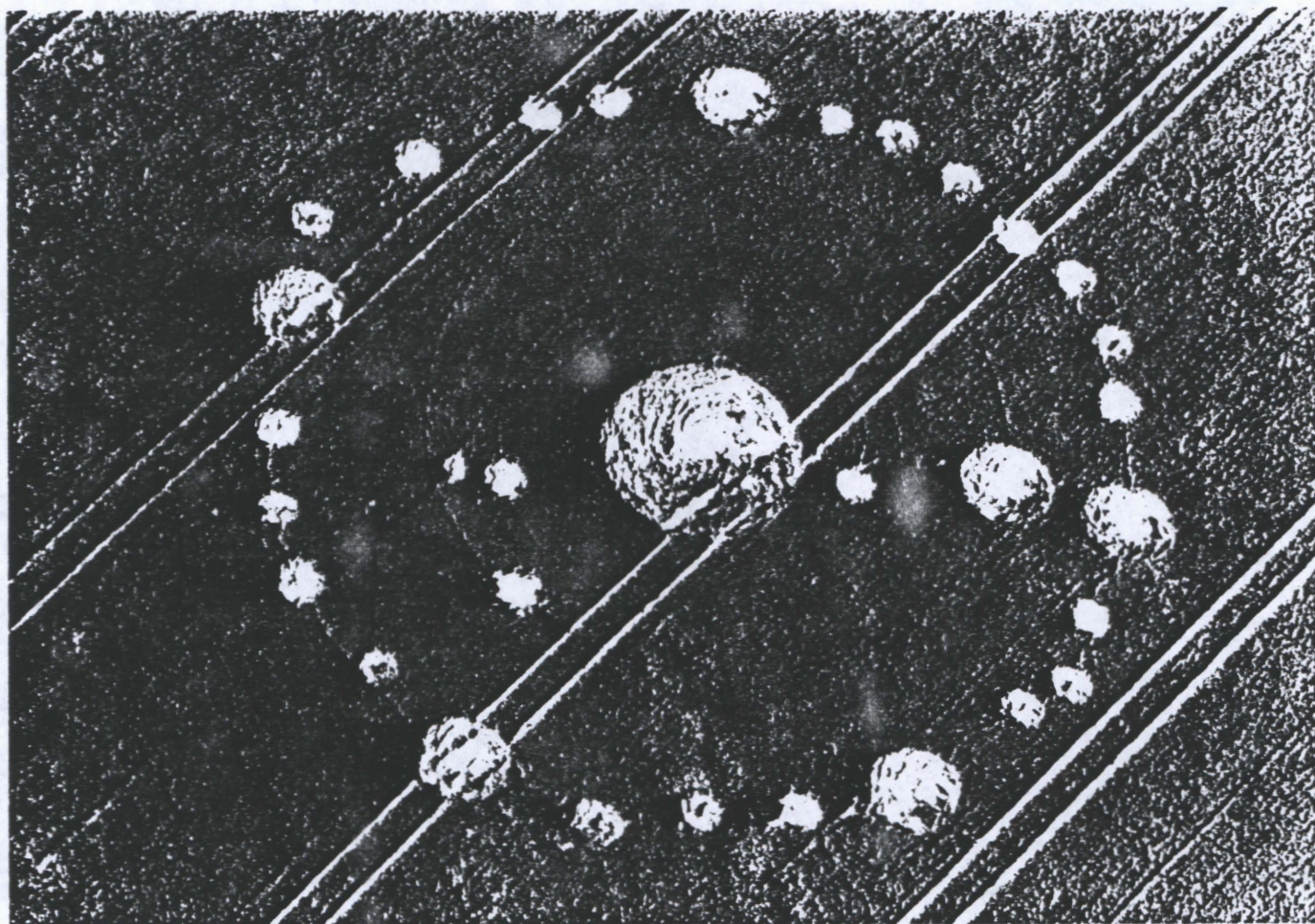
Michael Newark, the dowser is aged 56 and is married with three grown up children. He first became interested in dowsing when as a child he used to dows the beach at the seaside, searching for any coins that the holidaymakers had dropped in the sand. As he grew older and more experienced in dowsing, Michael Newark realised that dowsing opened up higher levels of reality, exploring unknown 'Earth Forces'. He discovered that natural forces criss-cross the planet, not only do they exist, but they are active and grow in some regions, while quietly disappearing in others. All over the world there are ancient sites where the Earth force has been located and stored. Ley Lines (Dragon Lines) carry this earth force (which is both good and bad) to ancient sites all over the world.

According to Michael, this year the earth energy power is double that of last year and the Ley Lines are radiating earth energy to all parts of the country, forming Crop Circles when the conditions are right. The Crop Circles usually form where there is a "spiders Web" of earth energy (so called because of the energy pattern), but the energy is multi-dimensional and a Crop Circle forms where there is a joining of the energy from both above and below the ground (Yin & Yang) an energy matched in harmony with the Earth and Cosmic forces.

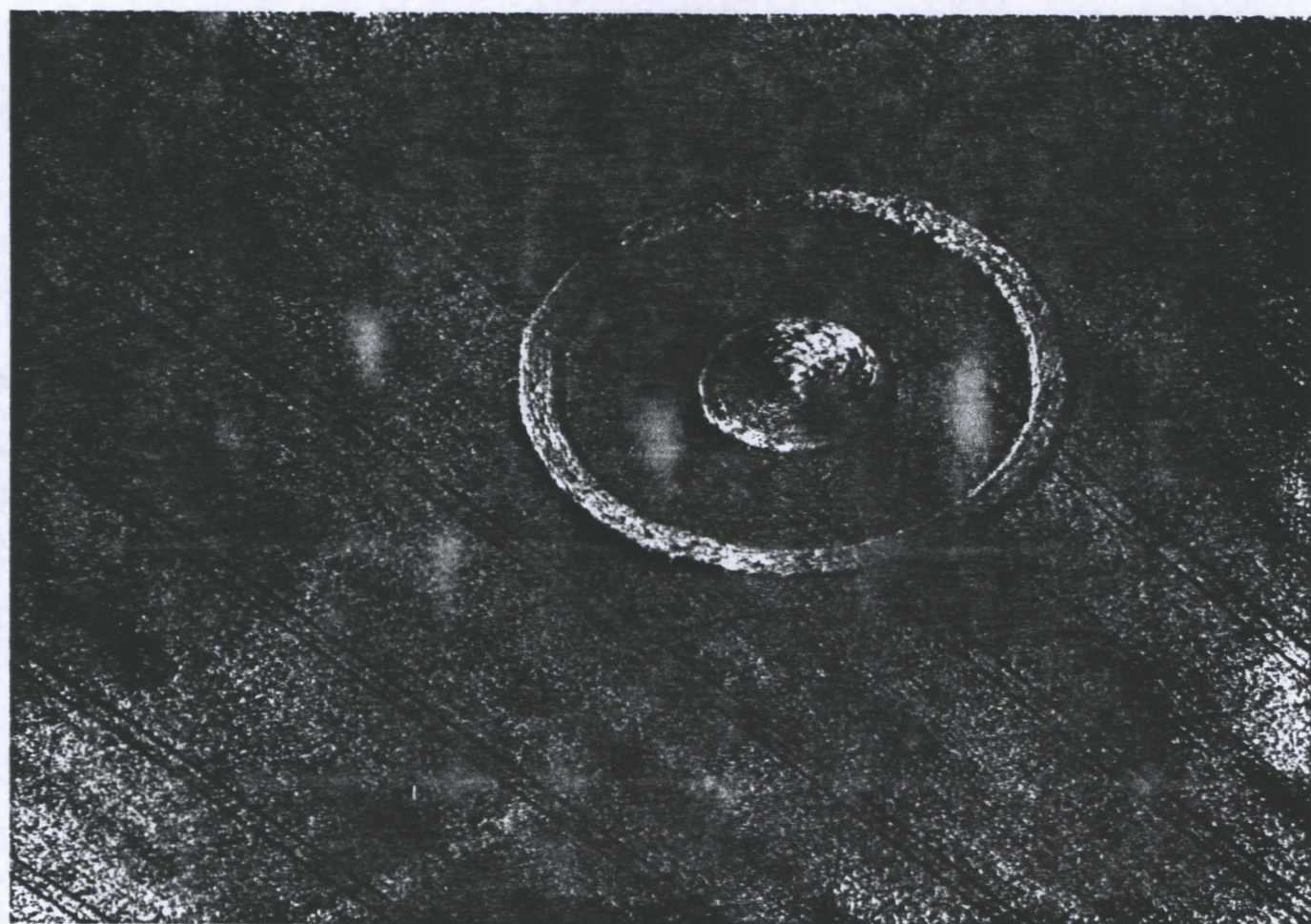
Michael Newark first associated earth energy forces and Crop Circles in 1992, when he located earth energy force patterns at every genuine Crop Circle site, in a similar way he had found similar forces at ancient sites of worship, while at the same time finding no earth energy where the Crop Circles had been 'hoaxed'. Michael maintains that everything has a dowsing 'frequency', both natural and man-made, in the same way, everything has an 'aura' around it and can be dowsed.

Michael is currently exploring the power absorption of Crop Circles with Jim Lyons of the CCCS, trying to analyse the different energy distribution in a Crop Circle. He believes that the Earth is like a huge magnet, drawing in energy as it rushes through space. Michael believes that we have a lot to learn from the people of the past and our own history.



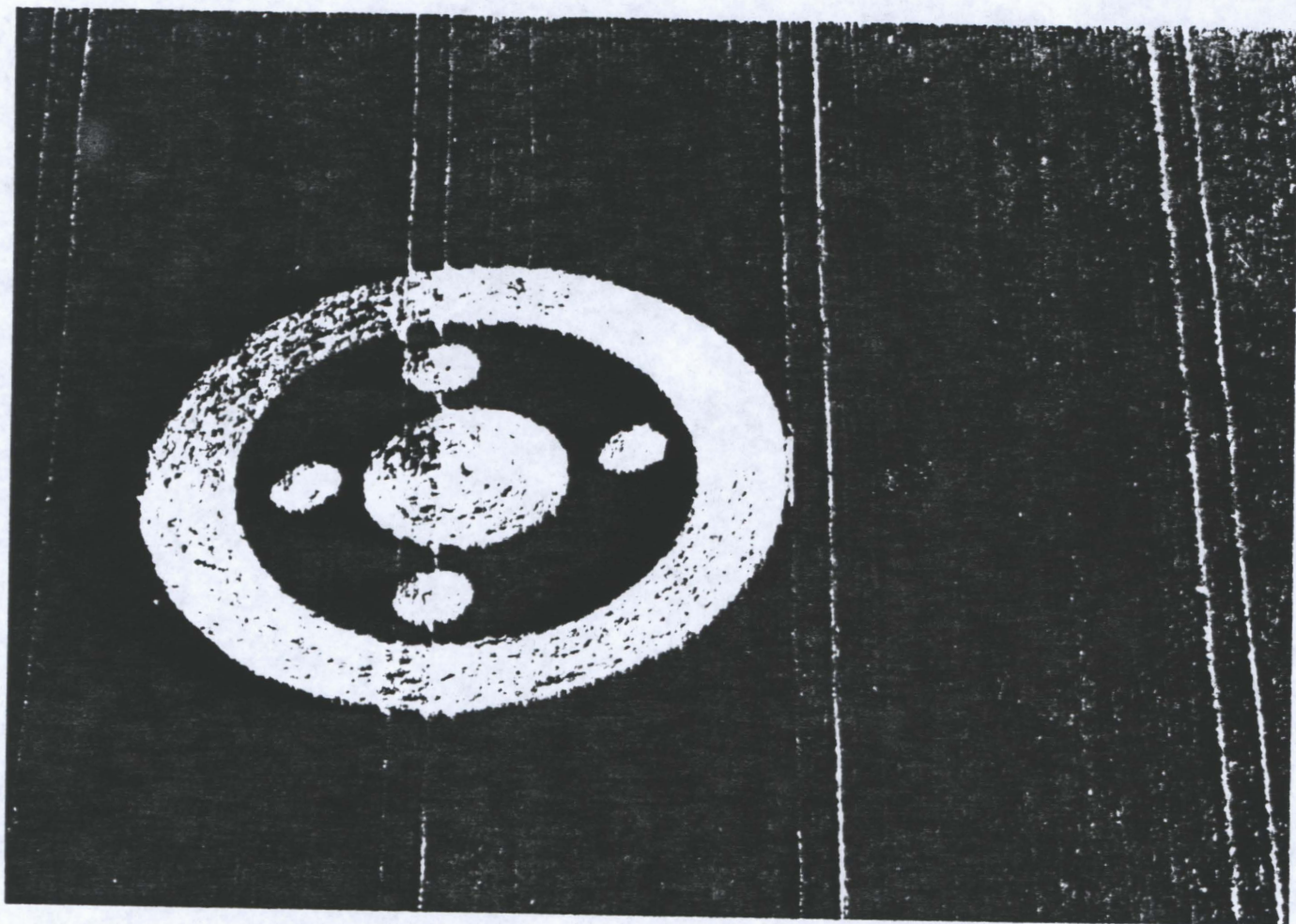


Matterley Farm

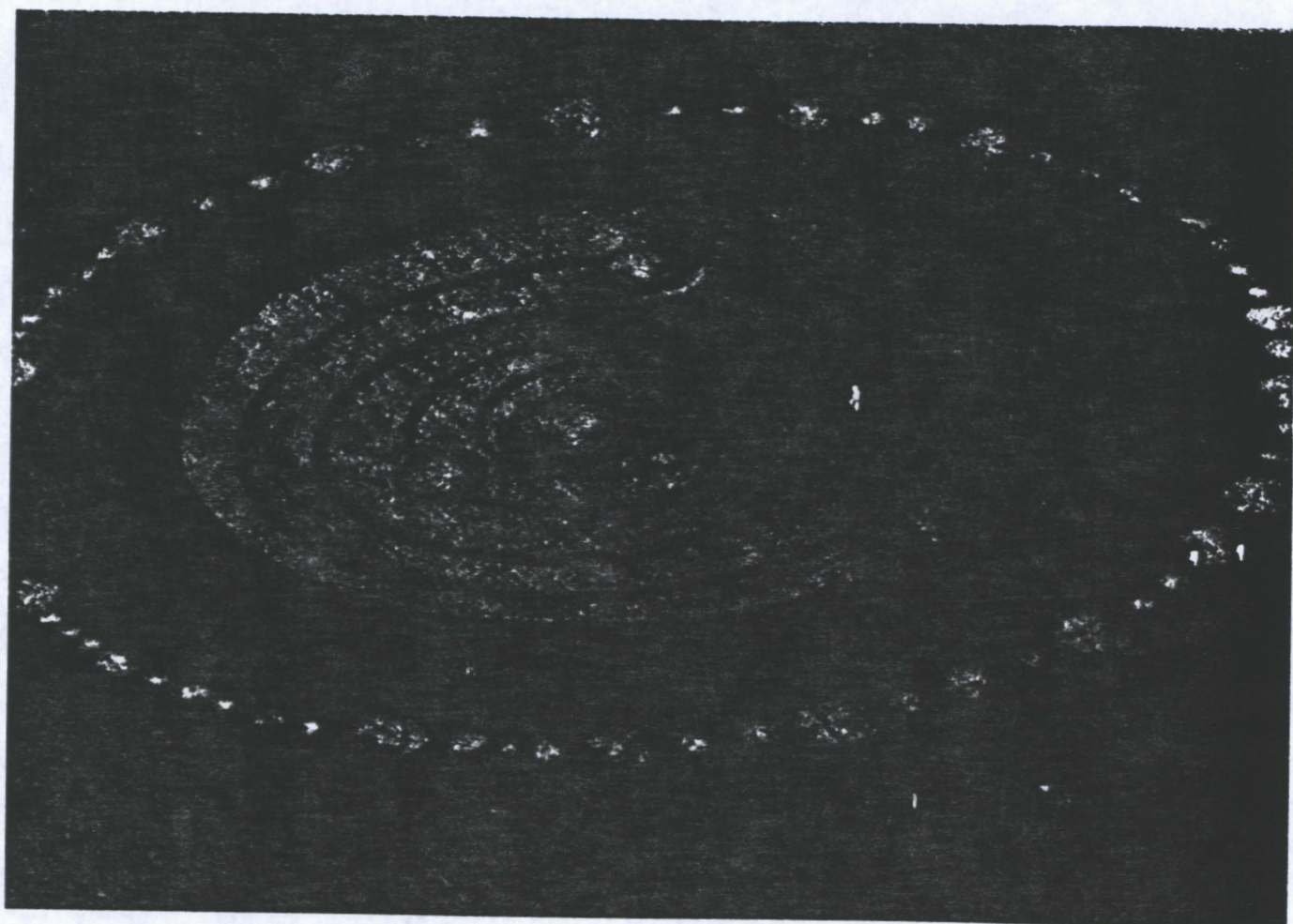


Reading, Berks.





West Stowell



Longwood Warren



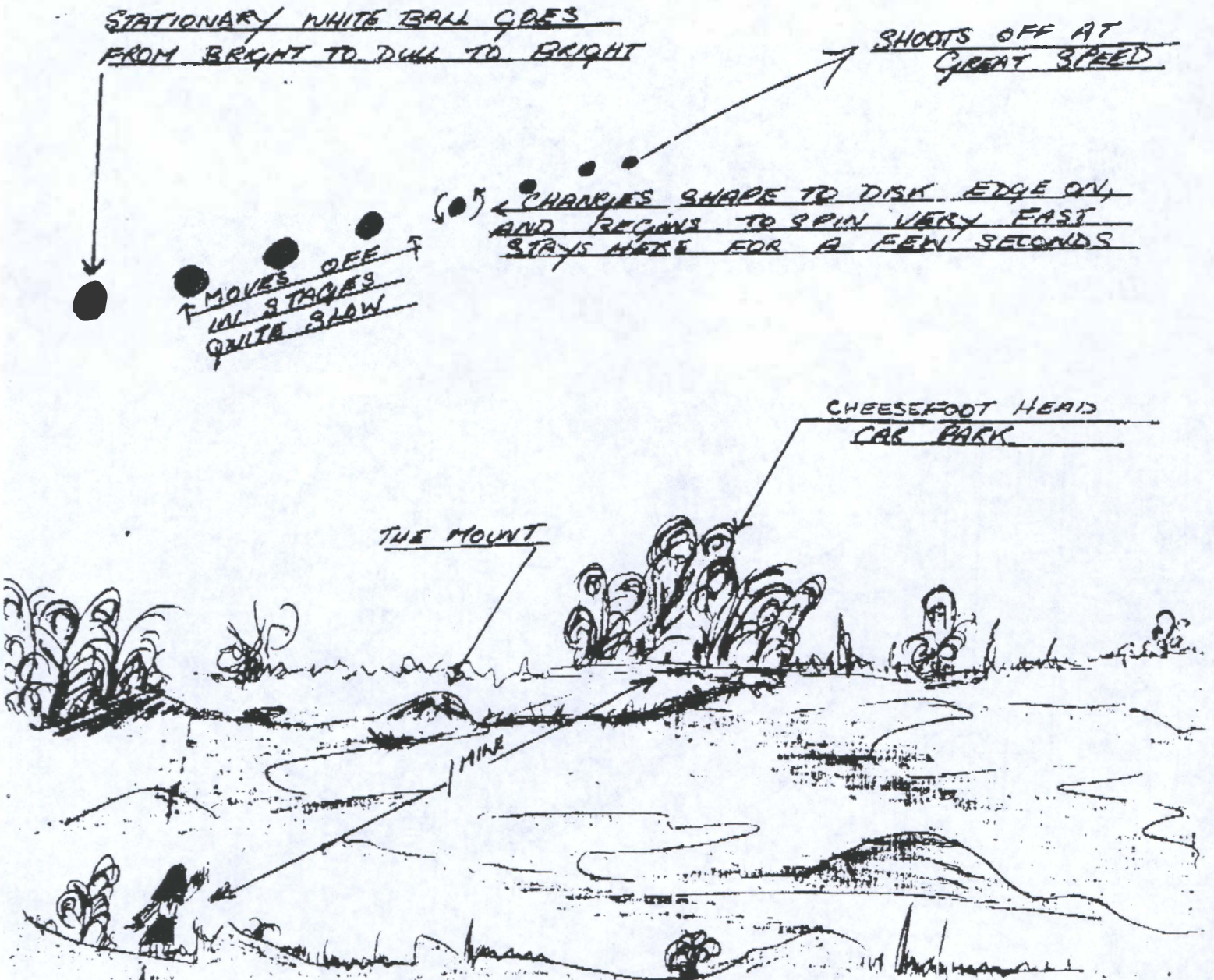
## UFO's TAKING AN INTEREST IN CROP CIRCLES?

We have received a report from Mrs Lorraine Maguire of the "Southern Paranormal Investigation Group" (Hampshire) of a UFO incident in the vicinity of Cheesefoot Head, near Winchester on the night of 26th June this year.

According to Lorraine, she was standing on a long barrow looking towards Cheesefoot Head at 11.15pm, when she saw what appeared to be a stationary white ball in the sky. The ball which initially only glowed a dull white, then brightened and moving slowly at first it then "shot off at great speed".

Lorraine Maguire's drawing of the incident is reproduced below.

Late Crop Circle News from Tony Caldicott CCCS East Midlands.  
New Circles at:- Burrow Hill, 6 miles south of Melton Mowbray (21-7-95) SK757123 & Woodhouse Heath (50' circle).





# MAGNETIC ENGINE by John Brickstock

THIS IS ESSENTIALLY A METHOD OF INDIRECTLY POWERING A LONG-DISTANCE SPACECRAFT WITH A ATOMIC REACTOR, ALTHOUGH, THE DESIGN COULD BE USED FOR SHORT-DISTANCES, IE AIRCRAFT JOURNE-IS CURRENTLY ACHIEVED,

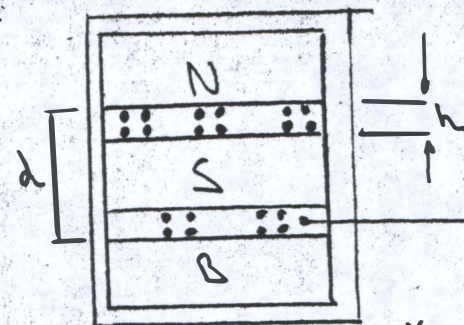
THE PRINCIPLE IS THAT THE ATOMIC REACTOR PROVIDES ELECTRICITY FOR THE DRIVE MAGNETS,

FROM DETAIL (A) THE NORTH MAGNET IS FIXED TO THE HUB OF THE CRAFT, THE SOUTH MAGNET IS FREE TO SLIDE (d), WHEN THE MAGNETS ARE ENERGISED

THE SOUTH MAGNET MOVES TOWARD THE NORTH MAGNET BUT IS PREVENTED FROM MAKING CONTACT WITH (N) BY A NON-MAGNETIC SPRING, THUS, FORCES ARE SET UP ON THE INTERNAL HUB OF THE CRAFT ie  $F_1 \rightarrow F_8$

AND FOR MOTION THE FORCES GENERATED ARE SET TO BE NOT EQUAL, SO FORCES ACTING ON THE CRAFT ARE IN DISEQUILIBRIUM THUS MOTION WILL OCCUR, FOR VERTICAL MOTION THE SAME APPLIES BUT (N) & (S) CAN BE MADE NOT EQUAL FOR UPLIFT

## DETAIL OF (A)



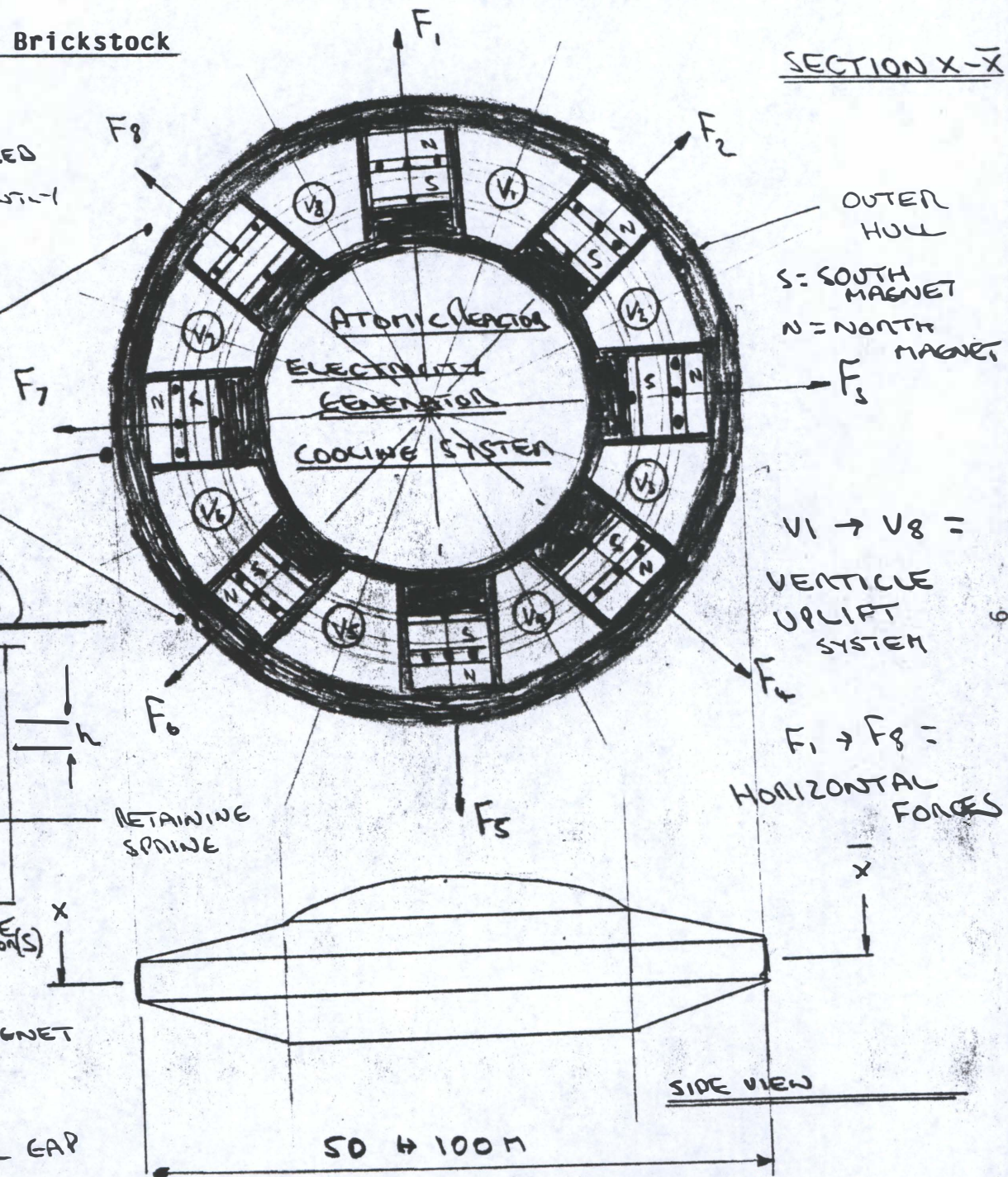
$d$  = MOVING RANGE FOR (S)  
N = NORTH MAGNET

S = SOUTH MAGNET

B = BASE

h = MAGNETIC GAP

x SPRINGS





# The Evening Sky

## July 1995

Strange that at the height of summer the Earth is actually at its greatest distance from the Sun. On July 3rd the Earth will be at 'aphelion', 94.5 million miles distance from the Sun.

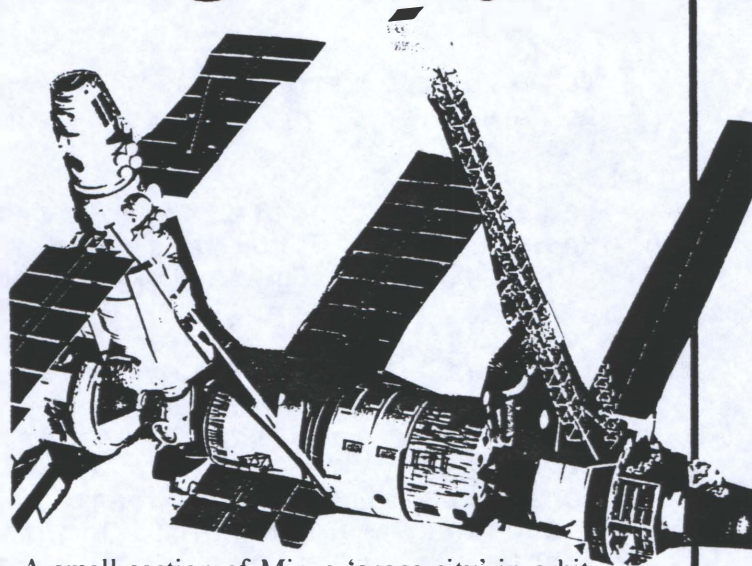
Travelling non-stop, on board Concorde at twice the speed of sound (apart from a one week stop at Venus) it would take about one-year and two-months to reach our Star, the Sun. Travelling to our nearest star system, Alpha Centauri, in Concorde it would take over 3 million years or 40,000 generations. Don't wait for a post card!

Jupiter dominates the southern sky at evening twilight. Mars lies in the south-western sky shining not much brighter than the star Regulus. Mars is moving swiftly out of Leo and across Virgo. You can follow the planet's progress quite easily throughout the month. The Moon, a thick crescent, is just below Mars at dusk on July 3rd.

If you are up early in the morning you may catch a glimpse of Venus and Mercury low in the north-eastern sky about 30 minutes before Sun-rise.

The occasional meteor will be whizzing across the sky in July. Several weak, long-lasting showers are active. The Delta Aquarid shower peaks at the end of July, as does the the Alpha Capricornid shower. Observing conditions will be excellent. The Moon is New, therefore the sky will be dark.

The U.S. Space Shuttle, Atlantis lifts off around July 24th to dock with the Russian space-station Mir, forming the largest and brightest artificial satellite



A small section of Mir: a 'space-city' in orbit

ever assembled. The space-station will be visible throughout July as a bright trace of light streaking across the sky. Russia has had the Mir space-station continually occupied for nine years with over 50 men and women coming and going about every six months.

Mir is really a city in space with 310 feet of cabins and passageways. Visitors arrive by Soyuz spacecraft while robotic cargo-ships (Progress capsules) bring supplies. Mir circles the Earth 15 times a day at an altitude of about 300 miles. The enormous Mir complex is subject to atmospheric drag which reduces its altitude by some two miles per month. The Progress space-capsules continually boost Mir's orbital height.

20 years ago, in July 1975, Apollo and Soyuz spacecraft linked together. That mission bore almost no fruit for US - USSR collaboration. Let us hope that this new opportunity may begin an era of cooperation and trust. In the end there must be an element of trust if humanity is to prosper. Our little planet Earth is abundantly rich. Why do we continually quarrel over and plunder that which is freely given to us?

*Enjoy Your Evening Sky!*

Barry Parkinson

'The Evening Sky' - P.O. Box 4002 - Milton Keynes - MK13 7ER - U.K.



## UFO's TAKE A HOLIDAY

We have had very few UFO reports in recent weeks, due no doubt to the very light nights being experienced at this time of the year.

We thought for one moment that the "Triangle" had returned, when a local Derby resident reported seeing a multi coloured light hovering in the sky over the Toyota car factory, west of Derby. However, after a careful review of the evidence PRA investigator Peter Edwards has confirmed that what the witness seen was a star low down on the horizon. The low viewing angle accounted for the report of multi colours as it was seen through the wavering atmosphere.

More promising is a recent report from several fishermen who witnessed a number of lights behaving erratically as they fished at night in Markeaton Park, Derby.....more details later.

We have just received a letter from the Birmingham UFO Society, which covers the West Midlands. They are keen on co-operating with the PRA in the exchange of UFO reports and information. The BUFOS group mentioned that FT's (Flying Triangles) have been reported from Birmingham, Rugeley, and Liverpool, with the most recent sighting being made in Stafford on the 15th of June 95!

## A REPORT FROM GUATEMALA

Over the years we have widened our contacts to take in a number of EEC countries and many others as far away as Japan. One of the most interesting liaisons has been made with a Guatemalan lawyer Doctor Oscar Rafael Padilla Lara. Dr Padilla is an investigator for APRO, a consultant to MUFON and a prominent member of several Guatemalan UFO societies.

Dr Padilla has recently sent us an article on his investigation of one of the many strange artifacts that have been found in recent years in the deep jungle of the country. It raises the question of how many former great civilisations might have existed before us in the past and what they may have achieved during their existence.

The current lack of UFO activity has given us the opportunity to publish Dr Padilla's article, which must be a "first" for the OVNI magazine.

A future article which is due to be published in the "Flying Saucer Review" will cover 50 years of sightings in Guatemala and touch on such subjects as the connection between the ancient Maya civilisation and the extraterrestrials!

O.F.



Guatemala, March 17, 1994

#### MYSTERIOUS GIGANTIC FACE FROM GUATEMALA

In the photograph which was taken around 1950, you can observe a great carved face. I found it on Saturday, August 16, 1986. Its measurements are: 4 meters in circumference, by 6 meters high, and it is very similar to the Easter Island giants, in the Chilean Republic in South America.

This face represents a strange civilization of this continent, and it has awoken great interest worldwide. I published it in the Ancient Astronaut Society magazine of the United States, in volume 14, No. 1, of March and April 1987, when I obtained the photograph, which was given to me by a relative who told me that it had been found on the Biener family's property, but he could not tell me the exact location where it was found. I investigated for over three years before finding it. I had NASA's offer to try to locate it by satellite, but it was not necessary because my investigation was well advanced.

To locate it, I travelled around 180 kilometers from the city, toward finca Las Victorias in Los Encuentros, San Felipe Retalhuleu, in Guatemala's Pacific coast, and from there 5 kilometers on a paved highway and then three kilometers on a dirt road in very bad condition, and then on 5 kilometers on foot, through the jungle, since there is no road to that place. When I reached the statue I found that there had been groups of outlaws camped there and that the statue had served them to practice shooting, therefore its eyes, nose and mouth were totally destroyed. The great joy and expectation with which I started on the expedition to find it since early that morning,



turned into a great sadness and disappointment as soon as I saw it, since I realized that we had lost an archaeological treasure with a great historical mystery for mankind.

The gigantic head is found in a narrow, uncultivated ravine, it is sculptured on soft stone, possibly of a mixed porous and sandy nature.

The face is long, resting on its upper part and it rests solidly on a thick neck. Its eyes are closed, its nose is long and thin and its mouth is straight. It looks like a sleeping person, with european features and does not resemble the Maya, Olmec or proto-Maya people. It looks more like the people from Hule, Tulan or Thule, and it could have been influenced by other civilizations, as in the case of the Easter Island giants, and like these, it is looking upwards, so I wonder if the same sculptors could have made it, or someone related to these.

An article was published in Life magazine of 1970, by the American Archaeologist Lee A. Parsons saying that the Archaeologists A. Ledyard Smith and Francis B. Richardson of Carnegie Institution of Washington had found it in 1941-42, and they took pictures of themselves next to the head. For personal reasons, they said that it had been carved by the manager of that plantation in memory of his wife and that is why there was a plaque at the foot with the initials "E.G.M." dated April 16, 1936, which according to them, this was the date when he carved it. To date, groups of Maya-Quiché Indians, not to mention Nahuas-Toltecs, go there and pray before the statue, therefore I do not consider it to be recent. The owner of the plan-



tation does not like outsiders to enter his property and has armed guards to prevent people from entering to worship the statue, but they go in even by force. I also had trouble in being allowed to go in, because the owner is a practicing Catholic and he believes that these are pagan rites which are against his Christian beliefs and this could also be the root of the story and the destruction of the statue. It is not such a long time since 1970, and no one seems to remember who the sculptor was or anything else about it. Could the plaque been placed there by the owner of the property or some explorer who found it at that time?

Besides, in that area there are many megalithic complexes and there is much evidence of giant statues but they have other features. I consider that it is real, not recent, but you can draw your own conclusions.

At present, Mr. Cuxeba says that there is another similar head in that area, therefore we will try to discover it before this year is over.

There are strange statues which resemble all the human races and wear strange dress and ornaments, and among all this there is carved even a Greco-Roman chariot.

Therefore, this photograph is historic and it will be useful to carry out an investigation regarding its origin.

Comparing the former with the Easter Island statues in the Pacific Ocean at 4,000 kilometers East of the coast of Chile in South America, this Island has hundreds of MOAIS statues, some of them



are standing, others have fallen; they watch the Earth, the sky or the sea, which were made by a very advanced civilization, according to some, related to the Mu continent, which were carved at the foot of a volcano called Rano Raraku and transported for several kilometers, in a mysterious manner to the sea shore.

These giants measure between 6 and 10 meters high and the largest measures 22 meters and is called the Giant.

I wonder if there could be some connection due to its mysterious nature and its size to the one in Guatemala?



Editors Note: We will leave the readers to speculate on the date of statue, but it appears highly unlikely that the local natives would worship a head as recent as 1936. What else can be hidden in the Guatemalan jungle awaiting discovery?



## TALE ENDERS

NEXT PRA MEETING will be at the end of August, details in the next OVNI...BUT DON'T MISS "Peter Robbins" (Rendlesham Forest co-author and associate of Larry Warren) speaking at the next EMUFORA meeting 21st August 7.30pm The Old Basford Centre, Davids Lane, Basford, Nottingham. We understand that Rendlesham incident witness and ex-USAF police patrolman Larry Warren is still unable to leave the United States).

THE ROSWELL AUTOPSY FILM is causing quite a stir...is it a fake or not? No doubt in Stanton Friedman's mind, he recently told a PRA member over the transatlantic phone "the film is an out and out hoax!" With video copies due to go on sale on 26th August at £33 a copy, (Roswell Offer, PO Box 1790, Marlow, Bucks.) someone (Ray Santilli?) is out to make a lot of money! Apparently the autopsy film is quite gruesome, "it was definitely a body of some kind" (George Wingfield). The poor quality of the film in no way compared with the high standard produced by American military cameramen of WW2.....If anyone purchases a copy at £33, then I would like to know their opinion. I for one won't be spending any money on it. Ed.

BBC PEBBLE MILL recorded a short UFO programme on July 11th, featuring your editor Omar Fowler v Charles Leonard BSc, MSc, CBIol, MiBIol and Managing Director of Coventry University. It seems the BBC are preparing a counter attack against Channel 4, who are believed to have purchased rights to show the Roswell footage in August.

COMING SHORTLY: A Quest 2nd International UFO Conference on Saturday 24th & Sunday 25th February 1996. Featuring Stanton Friedman, Graham Birdsall, Robert Dean, Anthony Dodd. Tickets £8.

Dr John E. Mack is bracing himself to do battle with a panel that has been set up by Harvard University to assess whether his recent public appearances and his book "Abduction" compromise the status of the College. Dr Mack is due to visit the U.K. next month, but there is now some doubt as to whether he will keep to his schedule of visits.

TRIANGLE OVER THE SOLENT (from London UFO Studies magazine Skylink). On 26th February 1995 at 1740/45 on board a ferry travelling between the Isle of Wight and Portsmouth, Lisa Williams saw a triangular series of bright lights (up to 15). The lights were orange/amber colour, the light on the nose was much larger and also triangular. There were four elongated lights n the top, five more rounded lights on the end five shorter than the top elongated lights on the bottom. The area within the lights was a little lighter than the surrounding sky. There was also a slight halo around the object (not around individual lights). The FT did not fly off, it appeared to hang in the sky motionless and then the lights seemed to vanish in an instant!